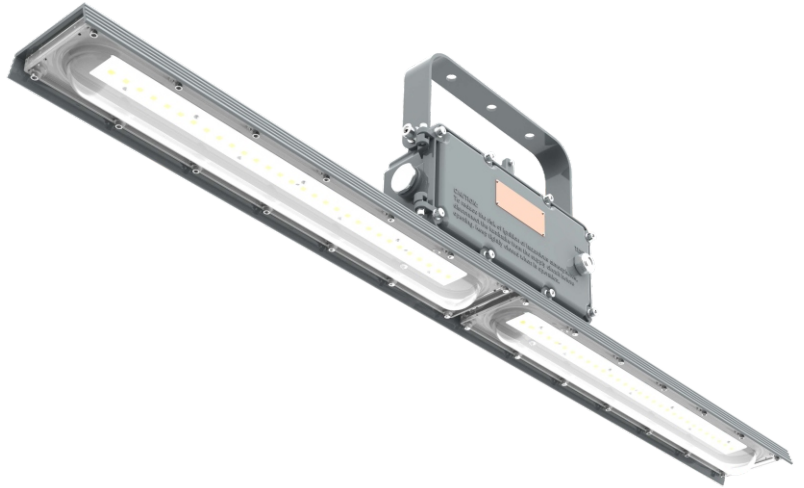


# H Series

## LED Explosion Proof Light



H2



H4

### Certifications:

- ◆ Marking ATEX
  - II3 G Ex ec IIC T5/T6 Gc
  - II2 D Ex tb IIIC T80/100°C Db IP66
- ◆ Marking IECEX
  - Ex ec IIC T6...T3 Gc
  - Ex tb IIIC T80°C /T95°C/T130°C Db
- ◆ UL844 Hazardous Locations (North American)
  - ◆ Class I, Division 2, Groups A, B, C, D
  - ◆ Class II, Division 1, Groups E, F, G
  - ◆ Class II, Division 2, Groups F, G
  - ◆ Class III
- ◆ Marine Marking
  - ◆ UL 1598
  - ◆ UL1598A
  - ◆ ABS
- ◆ IP66

**Key Features:**

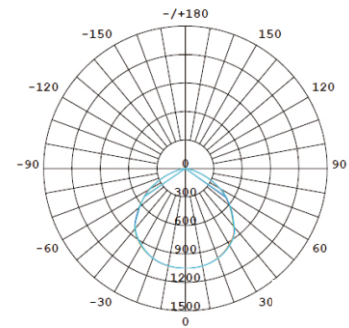
- ① Dimmable and battery backup function is available.
- ② High-quality SMT LED and Meanwell driver.
- ③ Heavy-duty and high impact resistance.
- ④ Replaceable LED board and drivers.
- ⑤ Integrated junction box for driver.
- ⑥ Marine rating powder coated finish treatment.
- ⑦ Various installation ways for different applications.
- ⑧ Glass lens or polycarbonate lens for making different beam angles.
- ⑨ 5-year warranty.
- ⑩ Low temperature applications to -40°C (-40°F) and high temperature up to 60°C (140°F).

**Standard Materials:**

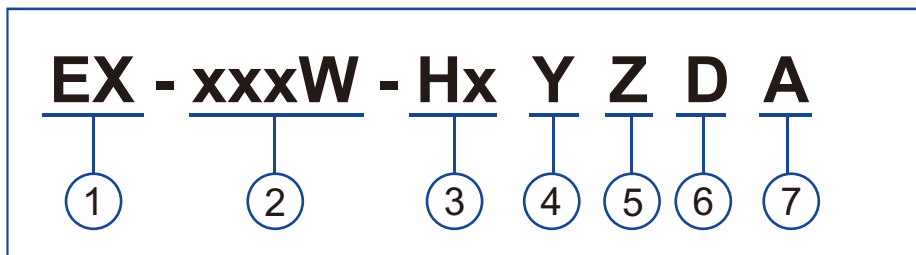
- ◆ Housing: Copper-free aluminum
- ◆ Lens: PC
- ◆ Hardware: Stainless steel
- ◆ Mounting Bracket: Stainless steel

**Photometry:**

Beam angle: 120°



**Catalog Number Logic:**



① **PRODUCT CATEGORY**

- ◆ Explosion proof light

② **WATTAGE**

- ◆ 20W/40W/60W/80W

③ **PRODUCT SERIES**

- ◆ H2    ◆ H4

④ **DIMMING OPTION**

- ◆ D= Dimmable
- ◆ N= Non-dimmable

⑤ **CCT**

- ◆ From 2200K to 7000K
- ◆ 22=2200K, 30=3000K, ..., 70=7000K

⑥ **BEAM ANGLE**

- ◆ D40= 40°    ◆ D90= 90°
- ◆ D60= 60°    ◆ D120= 120°

⑦ **GLASS TYPE**

- ◆ A=blank: Flat glass
- ◆ A=C: Spherical glass

**Technical Data:**

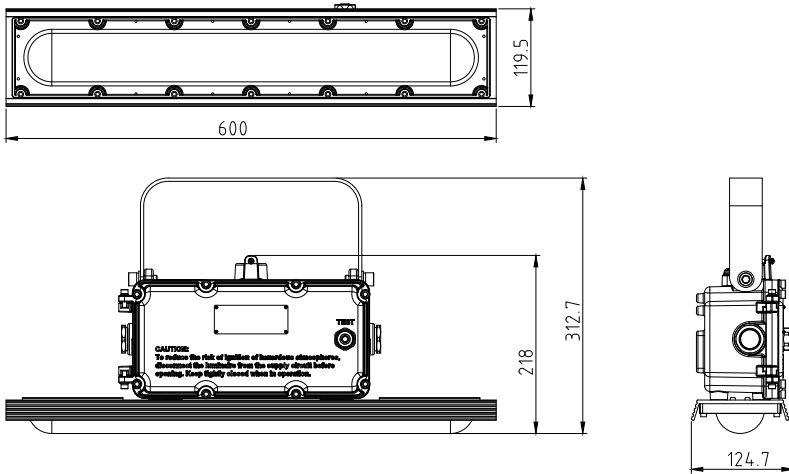
Model	Wattage	Operating Voltage	Lumens	Efficacy (lm/W)	CRI	CCT	Emergency Time
EX-20W H2YZDA	20W	AC100-277V/200-480V or DC12-48V	2,800	140	70	>2200K-7000K	3 hours
EX-40W H2YZDA	40W		5,600				
EX-40W H4YZDA	40W		5,600				
EX-60W H4YZDA	60W		8,400				
EX-80W H4YZDA	80W		11,200				

**Packing Information:**

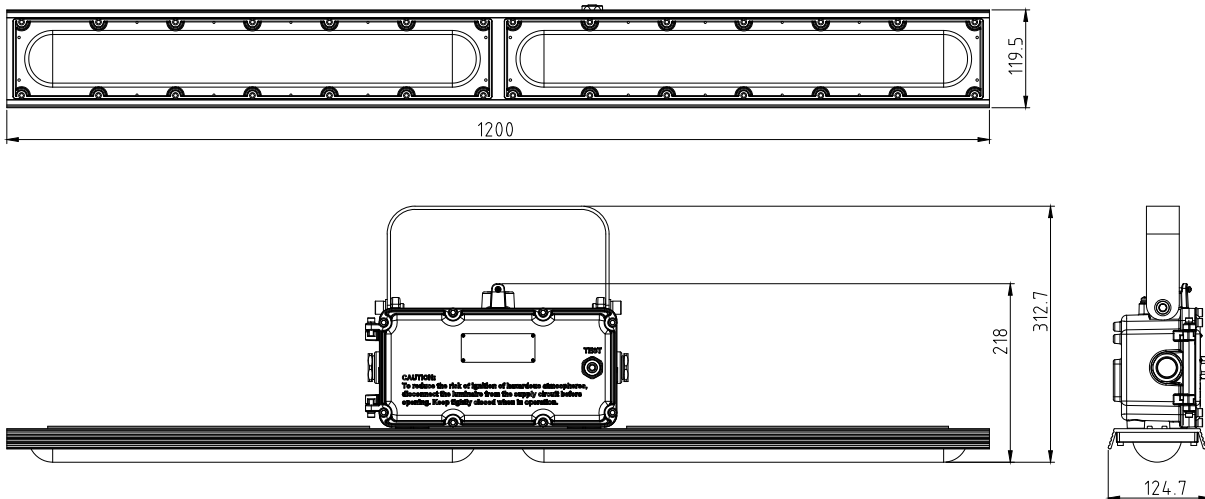
Model	Quantity/Carton	Packing Size	Net Weight	Gross Weight
H2	2 PCS	27.20x15.75x11.42inch	4 kg/ 8.82 lbs	9 kg/ 19.84 lbs
H4	2 PCS	51.18x15.75x11.42inch	5.5 kg/ 12.13 lbs	14.5 kg/ 31.97 lbs

**Dimensions:**

**H2 Series**

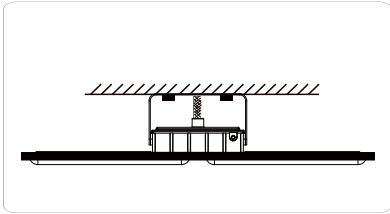


**H4 Series**

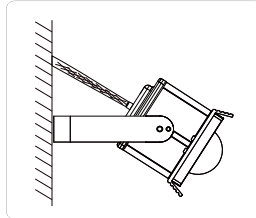


**Mounting Methods:**

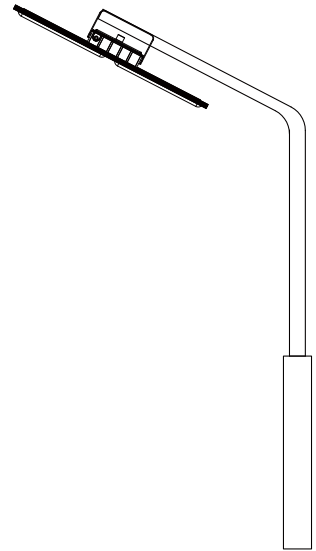
◆ Ceiling Mounting:



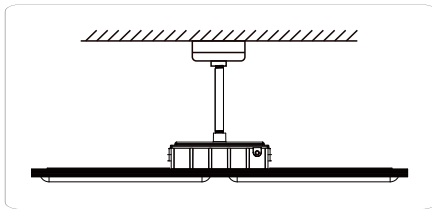
◆ Wall Mounting:



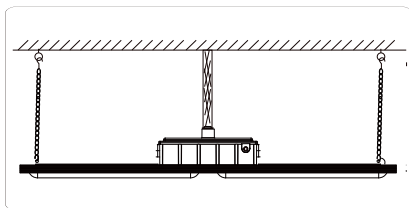
◆ Pole Bracket Mounting:



◆ Pole Pendant Mounting:



◆ Chain Mounting:



**Accessories:**



- Model: Ex-Bracket  
Name: U-bracket  
Material: Stainless Steel



- Model: EX-Bended Pipe  
Name: Bended Pipe  
Material: Iron



- Model: Ex-Conduit 01  
Name: Metal Conduit  
Material: Stainless Steel and Aluminum

**Application :**

- ◆ Oil and gas industry
  - All petroleum production and refining
  - Petroleum loading and transportation
  - Petroleum storage and retail
  - LNG industry
  - All mining operations and service
- ◆ Ocean, marine and aerospace field
  - Ocean platform operation facilities
  - Aerospace clean room and production
  - Ocean vessel operations
- ◆ Chemical industry
  - All types of paint facilities
  - Chemical production and storage
- ◆ Food and alcohol industry
  - Flour and fine particle production and storage
  - Food and distilling production
  - Alcohol industry
- ◆ Metal treatment
  - Steel and aluminum factories
  - Pumping stations in any environment
  - Metal smelting, foundry and fabrication
- ◆ Other high humidity, high dust, high temperature, vapor locations.