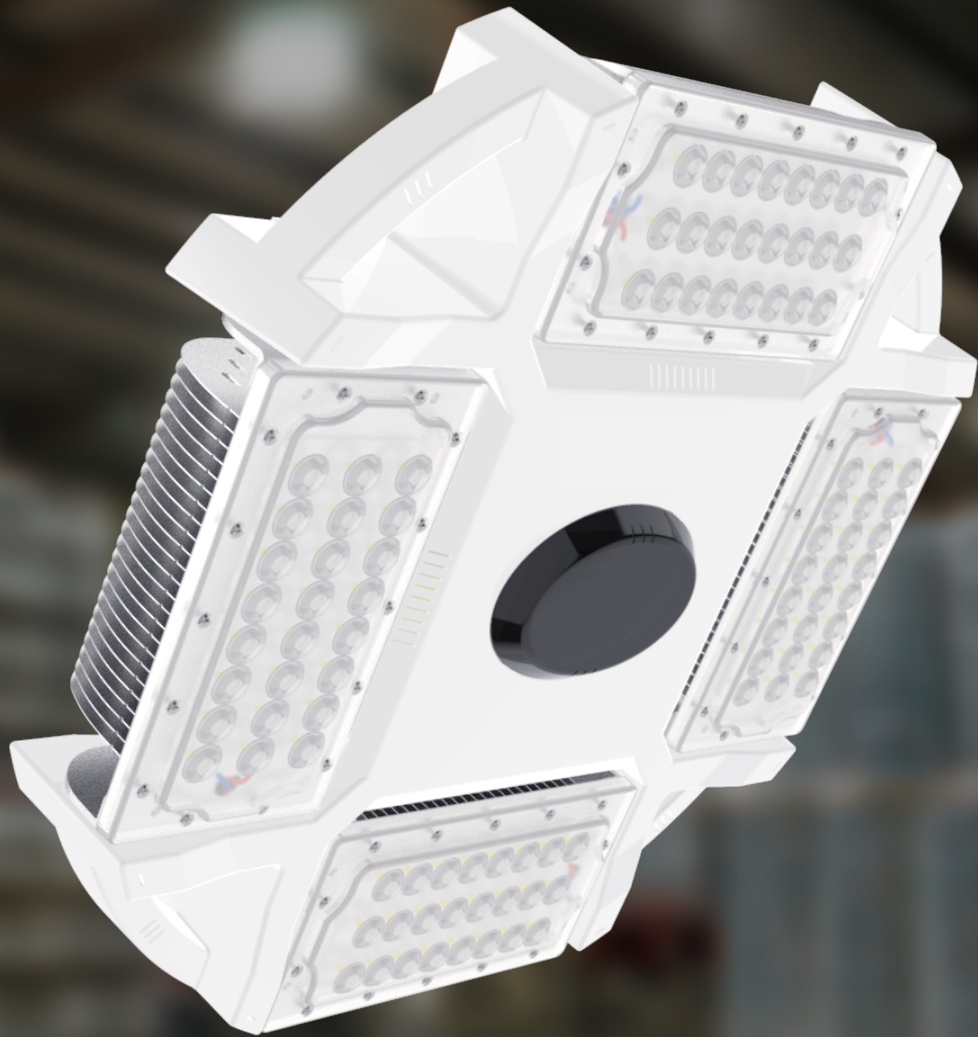


VOLTUS

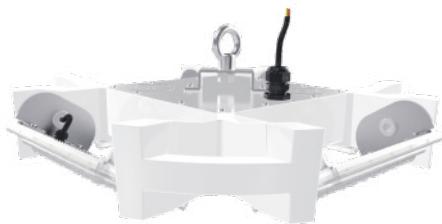
Industrial /Manufacturing High Bay Fixture



RoHS

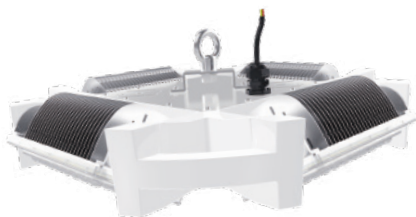


WATTAGE OPTIONS	100/150/200/240/300/400/480W
LAMP LUMINOUS FLUX	160LM/W±5%
CRI	Ra>70/80
CCT OPTION RANGE	2700-6500K
OPERATING VOLTAGE	AC 90-305V, 50/60Hz >0.95 347/480V (Option available)
BEAM PATTERN OPTIONS	60°/120°(100/150/200/240W) 30°/60°/90°/120°(300/400/480W)
IP RATING	IP65
HEAT-SINK	6061 ALUMINIUM
OPERATING TEMP	-40°C~60°C



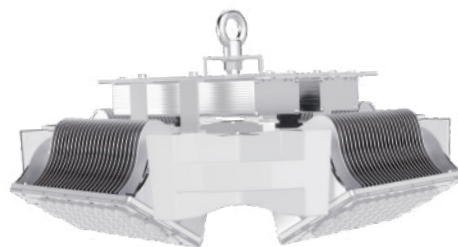
100W
16,000LM
4.5kg
429×429×159mm
10lbs (~17"x17"x6.25")

150W
24,000LM
4.5kg
429×429×159mm
10lbs (~17"x17"x6.25")



200W
32,000LM
5.3kg
429×429×159mm
12lbs (~17"x17"x6.25")

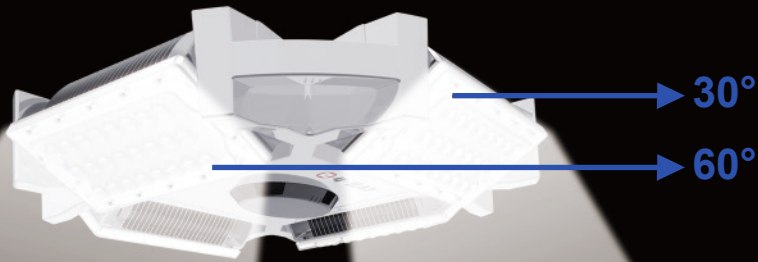
240W
38,400LM
5.3kg
429×429×159mm
12lbs (~17"x17"x6.25")



300W
48,000LM
7.1kg
429×429×225mm
15.5lbs (~17"x17"x9")

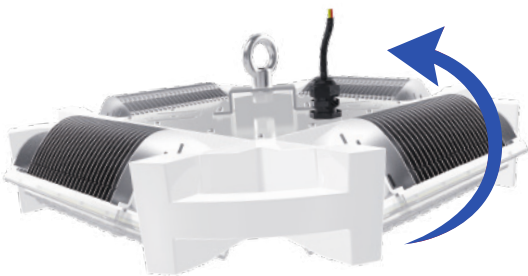
400W
64,000LM
7.4kg
429×429×225mm
16.5lbs (~17"x17"x9")

480W
76,800LM
7.4kg
429×429×225mm
16.5lbs (~17"x17"x9")



Multiple Light Distribution Options

Multiple optical lens choices are available with varying beam patterns 30°/60°/90°/120° to meet multiple application requirements and optimal light distribution options.



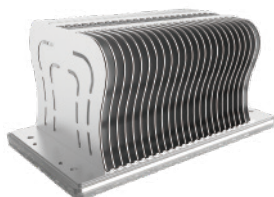
- Lightweight
- Modular
- Installation & Maintenance Friendly
(multiple hanging options/ modules are individually replaceable)

Sensor Options

- Microwave on/off Sensor
- Microwave Dimmable and Timer Sensor
- Remote Placement Sensor



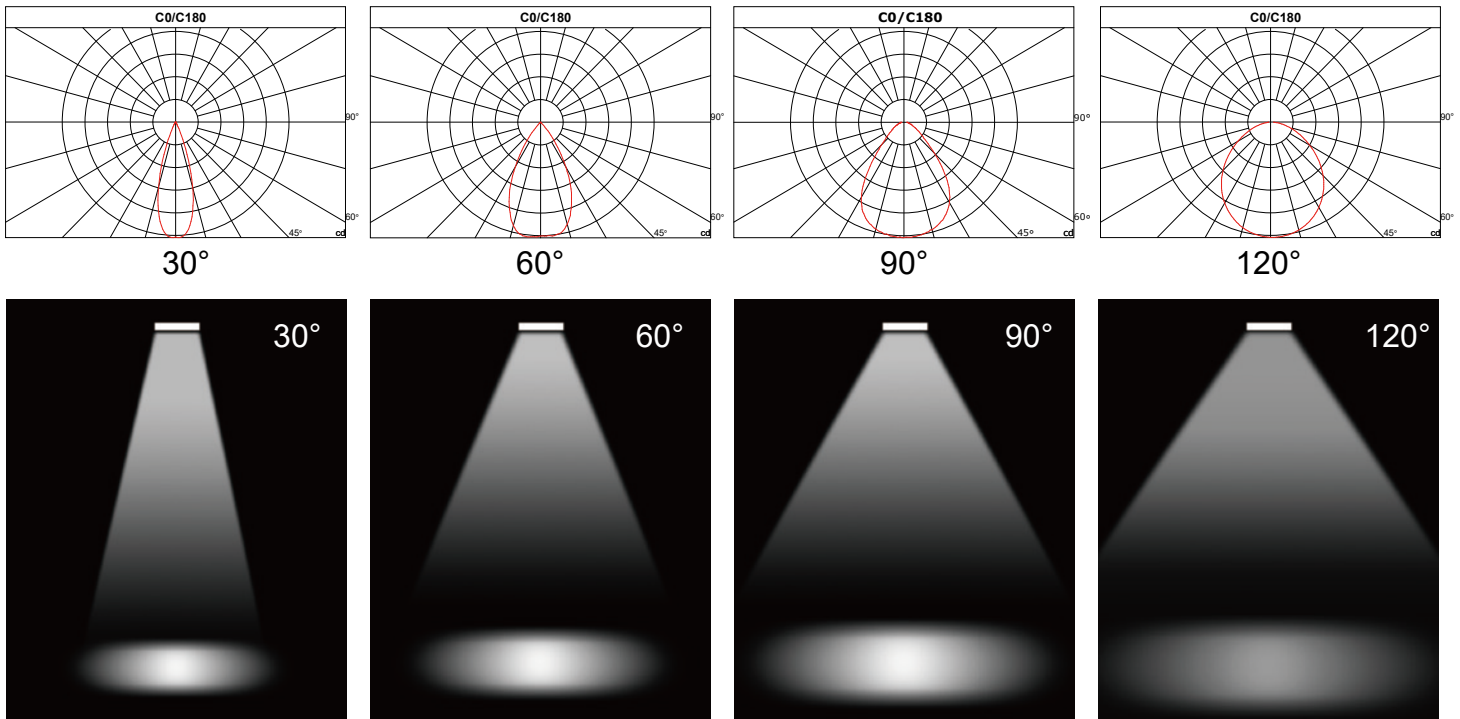
Original Design Heat-Sink



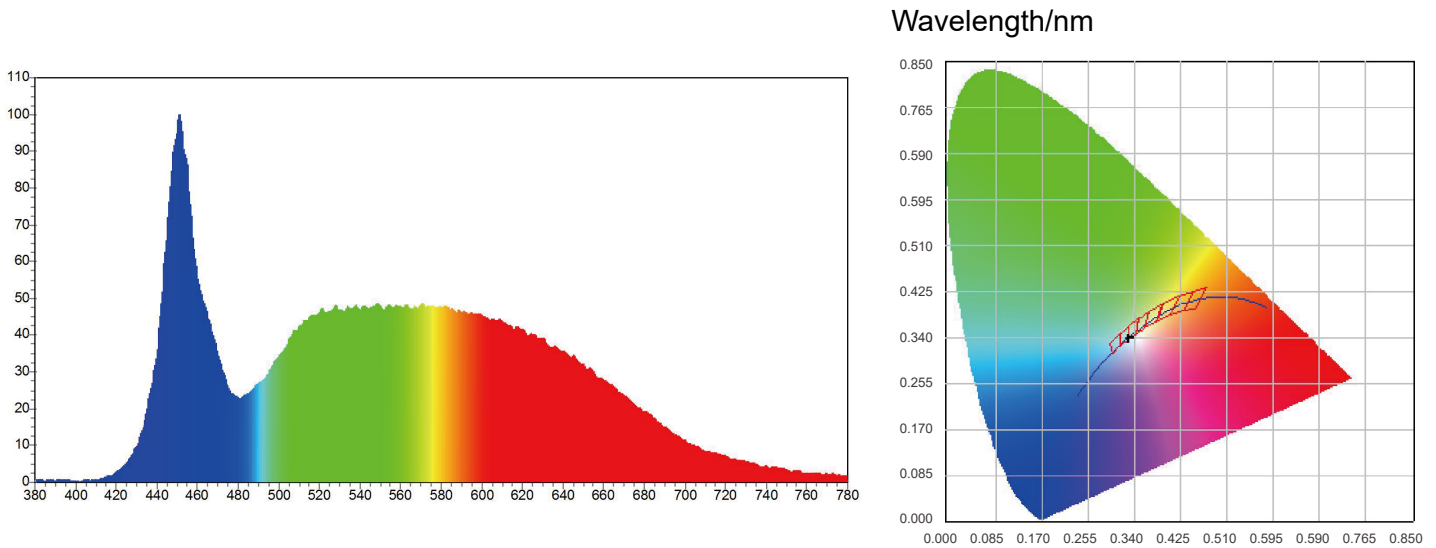
Patented Heat Sink Design

Testing Profiles

- Aging
- UV Aging
- Salt Spray
- Temperature parameters (high/low)
- Vibration
- Electronic (voltage stability)

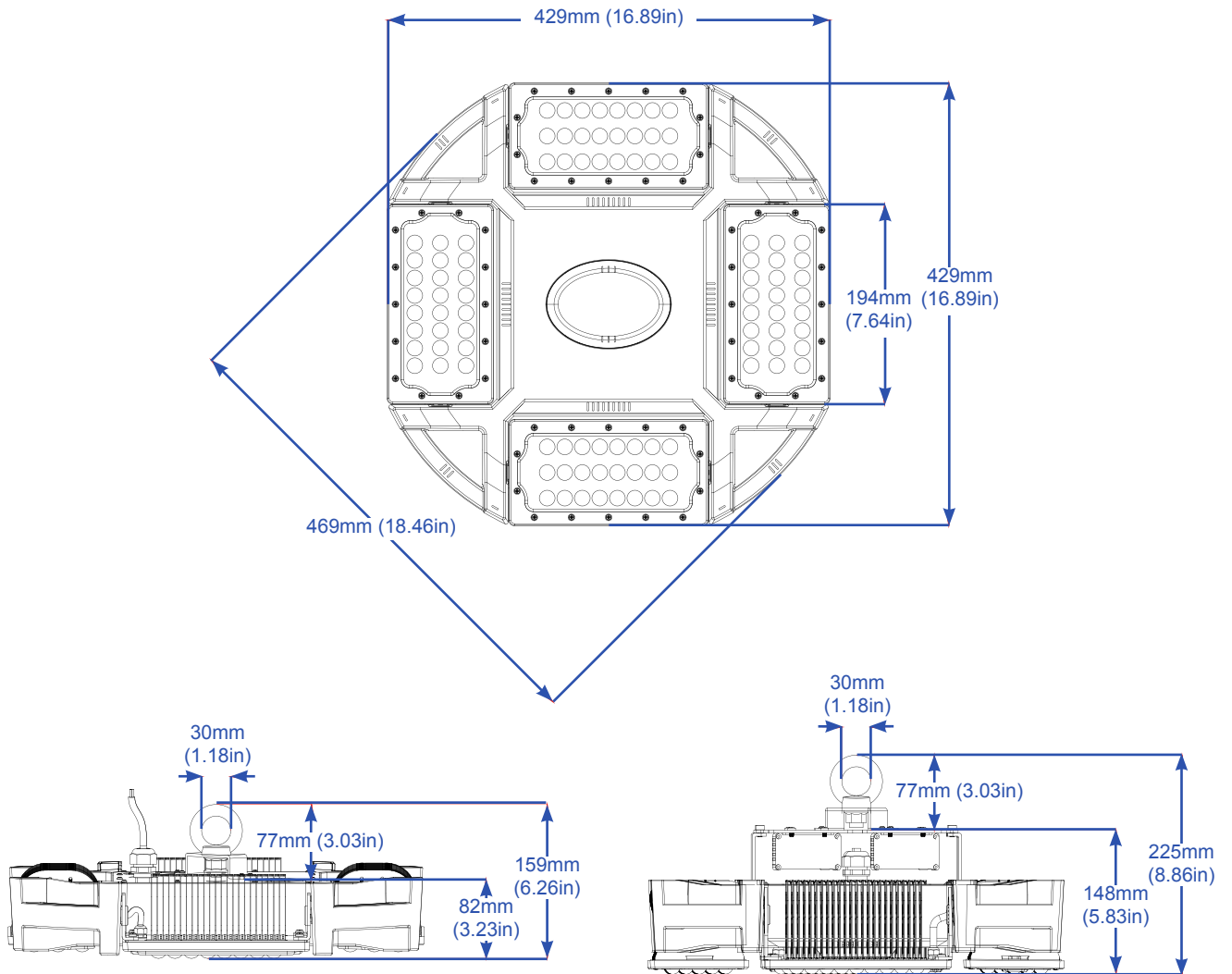


Intergrating sphere test report 4BAY-200W-5000K

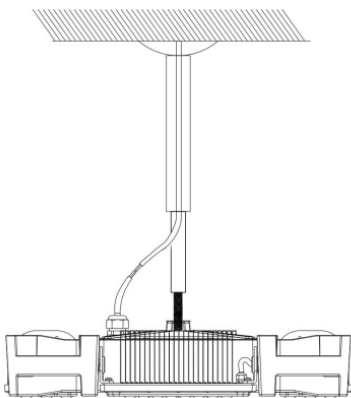


Spectrum		Electrical		
WD:	551.5 nm	I(test):	907.6 mA	
WP:	451.3 nm	V:	220.80 V	
HW:	21.0 nm	Flux:	32156.184 lm	
R%:	31.2	P:	160.460 lm/w	
G%:	41.0	P:	15776.76mw	
B%:	27.8	VP:200.400W	PF: 0.9610	
CIE(x,y):	0.3327 , 0.3433	R1: 31.2	R2: 87.2	R3: 88.9
CIE(u,v):	0.2062 , 0.3191	R4: 90.0	R5: 87.1	R6: 87.4
Ra:	85.1	R7: 89.9	R8: 85.6	R9: 55.7
DUV:	0.0010	R10: 82.1	R11: 91.5	R12: 62.3
CCT:	5488 K	R13: 88.3	R14: 96.2	R15: 89.8

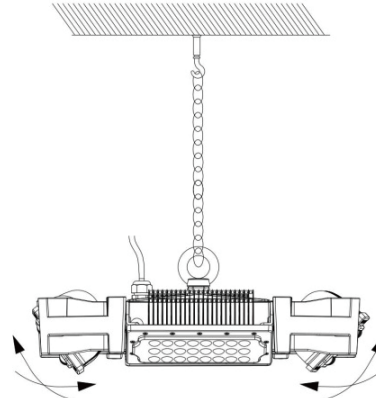
Size



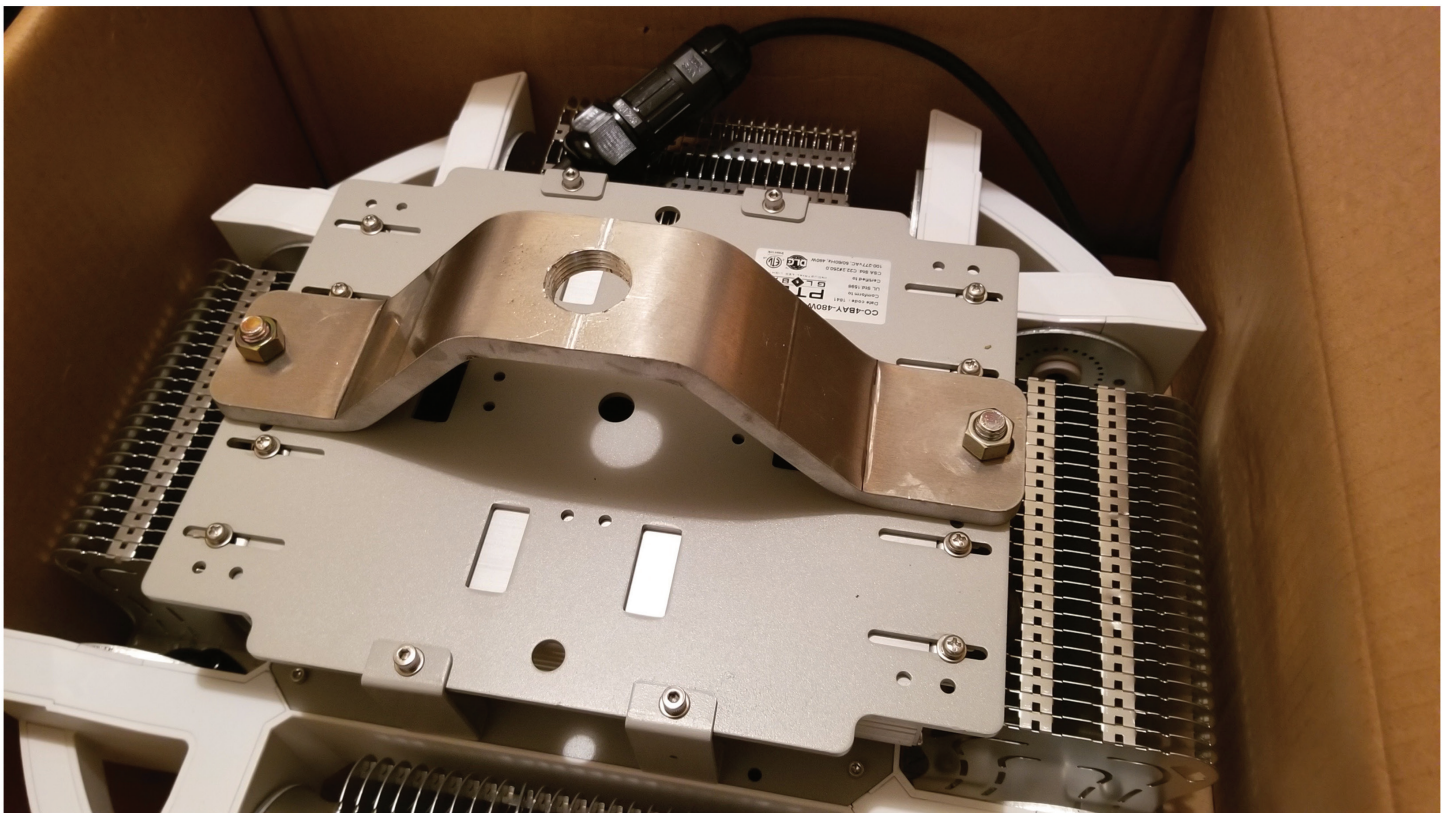
Extension aluminium pole



Iron chain

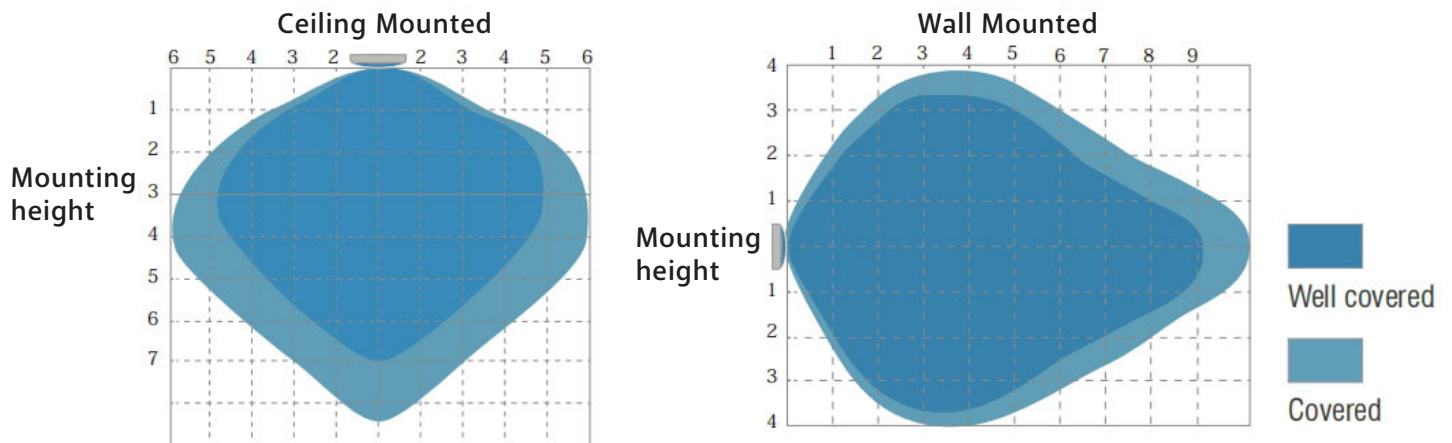


Optional Heavy-duty 1/4" Stainless Steel Hat bracket with .50 NPT available for fixed conduit mounting installations



Option Sensor Type A: On/Off. (DISTANCES IN METERS)

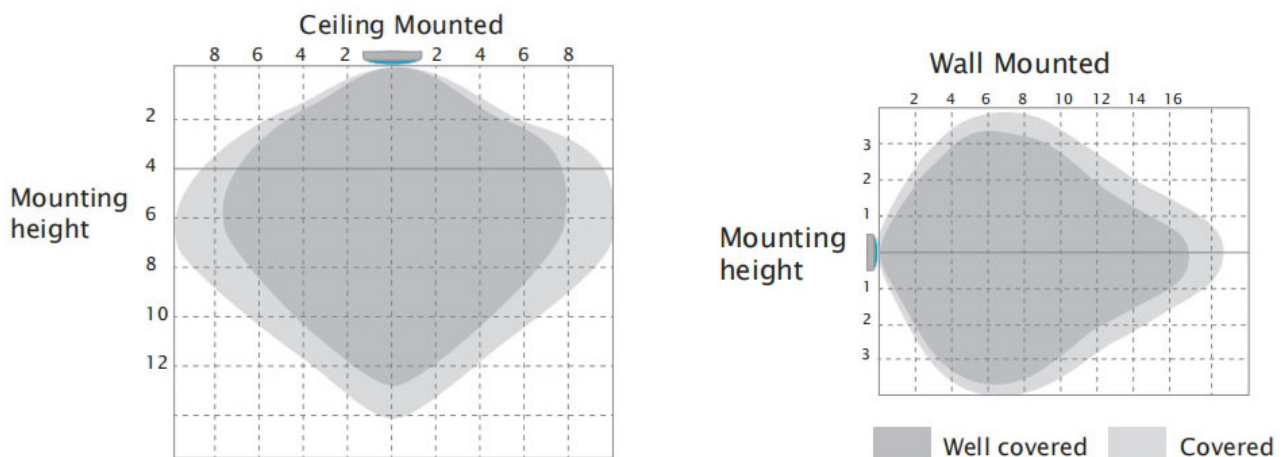
Detection Coverage



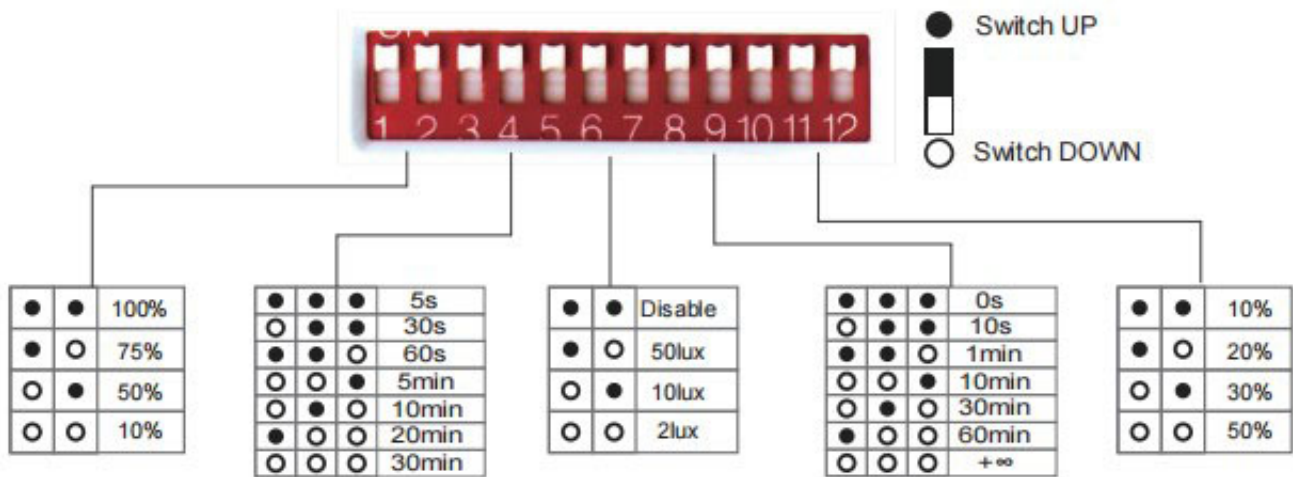
Option Sensor Type B: with Dimming function.

Detection Coverage

This figure indicates the maximum distance at the highest mounting height with 100% sensitivity.
Typical installation height 8–12m



Here are the settings on the sensor.



Detection area

In this area, movement will be detected and able to trigger the sensor. 100% detection area is also known as the strong sensitivity.

Hold- time

The period of light keeping 100% brightness after moving objects leave the detection area.

Daylight threshold

Definition of the ambient brightness; only when the ambient brightness is lower than the preset specific lux amount, the sensor will work; when it's preset as "disable", the sensor works everytime it detects motion regardless the ambient brightness.

Stand-by period

The period of light keeping low output before it's completely switched off. When it's preset as "∞", the light always keep at low output if no movement in the detection area and doesn't turn off.

Stand-by dimming level

The definition of low output in the standby period.